

Chamber music

Violoncello / Basso

Eine kleine Nachtmusik in G

KV 525

W. A. MOZART 1787

Allegro \checkmark

f

6 2 3 4 1

12 \checkmark 1 \checkmark

p *sf* *p*

19 *sf* *p* cre - scen - do *f*

25 *p*

30 \checkmark \checkmark \checkmark \checkmark \checkmark \checkmark \checkmark \checkmark

35 \checkmark \checkmark \checkmark \checkmark \checkmark \checkmark \checkmark \checkmark \checkmark \checkmark

41 *p*

47 \checkmark *f*

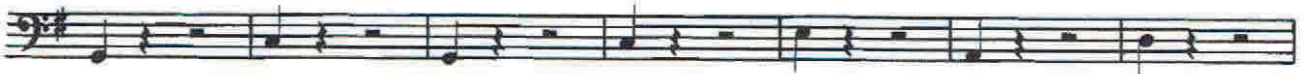
51 *p* \checkmark \checkmark

56 \checkmark \checkmark \checkmark \checkmark \checkmark \checkmark \checkmark \checkmark \checkmark \checkmark

f *p*

Violoncello/Basso

61



68



75



81



87



93



99



104



109



116



121



126



132



ROMANCE

Andante

First staff of music, starting with a *p* dynamic and a *f* dynamic. A *V* marking is present above the staff.

Second staff of music, starting at measure 9. Dynamics include *p*, *cresc.*, *f*, *p*, and *f*.

Third staff of music, starting at measure 17. Includes a *p* dynamic and a *V* marking.

Fourth staff of music, starting at measure 21. Includes a *p* dynamic.



Fifth staff of music, starting at measure 26. Includes *V V n* markings above the staff.

Sixth staff of music, starting at measure 32. Includes a *f* dynamic.

Seventh staff of music, starting at measure 39. Includes *Viol. I.*, *p*, and *sfp* dynamics. A *V* marking is present.

Eighth staff of music, starting at measure 43. Includes *V* markings and *2* (second endings) markings.

Ninth staff of music, starting at measure 48. Includes *V* markings, a *1* (first ending) marking, and a *p* dynamic.

*) Ausführung:  entsprechend in allen folgenden Fällen.
 - Played:  and correspondingly in all subsequent cases.

Violoncello/Basso

52



59



Coda

